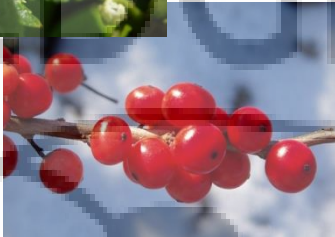


Ilex verticillata

Winterberry Holly

Female



- 6 to 10 feet x 6 to 10 feet
- Part sun
- Average to wet; prefers moist, acidic soil
- Deciduous, native holly prized for its vibrant, red berries that persist to brighten the winter garden
- Small, inconspicuous whitish flowers, June
- Females produce berries – need one male within 50 feet
- Medium green leaves turn burgundy in fall, dropping early to reveal berries

Larval host for Henry's Elfin butterfly



Native to PA