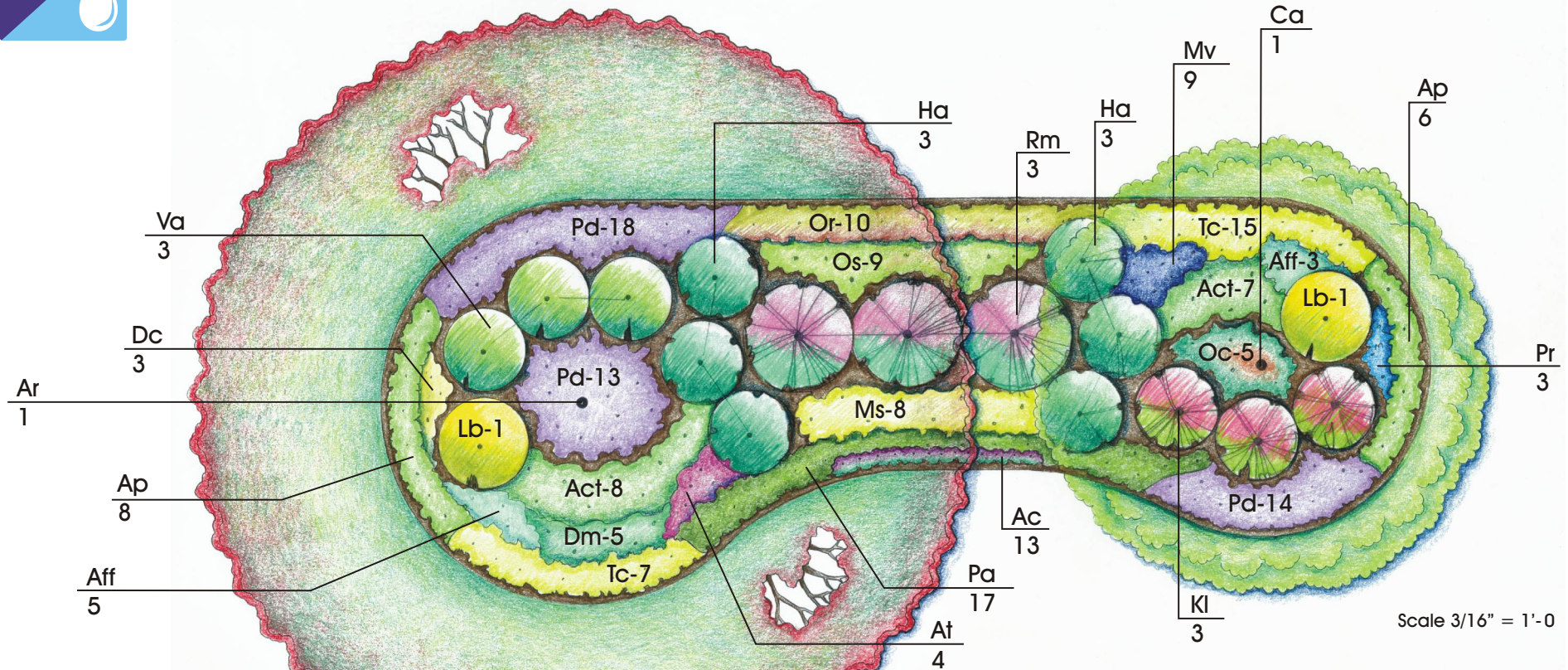




Shady/Moist Garden

Alternate view



Trees

- 1 - Ar **Acer rubrum** - Red maple
(size 2 1/2" - 3" cal. Single stem)
large deciduous
- 1 - Ca **Cornus alternifolia** - Alternate-leaved
(Pagoda) dogwood
(6'-7' heavy - well branched) ornamental

Shrubs:

- (#3 Container minimum up to #5 - #7 Container)
- 6 - Ha **Hydrangea arborescens** - Wild hydrangea
- 3 - Kl **Kalmia latifolia** - Mountain laurel
- 2 - Lb **Lindera benzoin** - Spicebush
- 3 - Rm **Rhododendron maximum** - Rosebay (size 36" BB)
- 3 - Va **Viburnum acerifolium** - Maple-leaved viburnum

Ferns:

- (#1 - #2 Container up to #3 Container)
- 14 - Ap **Adiantum pedatum** - Maidenhair fern
- 5 - Dm **Dryopteris marginalis** - Evergreen shield fern
- 9 - Os **Osmunda claytoniana** - Interrupted fern
- 17 - Pa **Polystichum achrostichoides** - Christmas fern
- 8 - Ms **Metfeucia struthiopteris** - Ostrich fern
- 10 - Or **Osmunda regalis** - Royal fern
- 5 - Oc **Osmunda cinnamomea** - Cinnamon fern
- 6 - Aff **Athyrium felix-femina** - Lady fern

Perennials:

- (#1 - #2 - #3 Container)
- 4 - At **Arisaema triphyllum** - Jack-in-the-pulpit
- 13 - Ac **Asarum canadense** - Wild ginger
(eg. #1 Container)
- 15 - Act **Actea racemosa** - Black cohosh
(eg. #3 container)
- 3 - Dc **Dicentra cucullaria** - Dutchman's
breeches
- 9 - Mv **Mertensia virginica** - Virginia bluebells
(eg. #2 or #3 Container)
- 45 - Pd **Phlox divaricata** - Wild blue phlox
(eg. #1 Container)
- 3 - Pr **Polemonium reptans** - Jacob's ladder
- 22 - Tc **Tiarella cordifolia** - Foamflower

DEBRA A. KIRKPATRICK RLA

LANDSCAPE ARCHITECTURAL DESIGN

725 Piketown Road, Harrisburg, PA 17112
Phone: (717)671-1636 Fax: (717)489-1438
Email: dakirkpatrick@comcast.net

Modifications to the plan might be needed or desired based on space limitations, proximity to buildings or other factors. This garden depicts plants that prefer shady moist conditions. As plantings mature, under story conditions will become shady and adaptations may be needed. You can find this and other native garden templates at www.iConservePA.org